

Instructional Evaluation
Form B: Large Lecture - Minimum Class Participation
Fall 2010

Instr: Kipp, Steven
Course: AST-101-05 (N = 40)
Number of forms requested: ?

Section 1: To provide a general evaluation		(5) High	(4)	(3)	(2)	(1) Low	N/A OMIT
1. The course as a whole	4.15	13 32.5%	20 50.0%	7 17.5%			
2. The instructor's contribution to the course	4.50	23 57.5%	14 35.0%	3 7.5%			
3. Use of class time	4.60	27 67.5%	10 25.0%	3 7.5%			
4. Instructor's interest in whether students learned	4.48	24 60.0%	11 27.5%	5 12.5%			
5. Amount you learned in the course	4.43	20 50.0%	17 42.5%	3 7.5%			
6. Evaluative and grading techniques (tests, papers, projects, etc.)	4.33	20 50.0%	12 30.0%	7 17.5%			1 2.5%
7. Clarity of student responsibilities and requirements	4.56	26 65.0%	10 25.0%	2 5.0%	1 2.5%		1 2.5%
Section 2: To provide feedback to the instructor		(5) High	(4)	(3)	(2)	(1) Low	N/A OMIT
8. Course organization	4.63	27 67.5%	11 27.5%	2 5.0%			
9. Sequential presentation of concepts	4.68	28 70.0%	11 27.5%	1 2.5%			
10. Instructor's use of examples and illustrations	4.80	32 80.0%	8 20.0%				
11. Clarity of instructor's voice	4.83	34 85.0%	5 12.5%	1 2.5%			
12. Student confidence in instructor's knowledge	4.80	33 82.5%	6 15.0%	1 2.5%			
13. Instructor's enthusiasm	4.78	31 77.5%	9 22.5%				
14. Explanations by instructor	4.73	29 72.5%	11 27.5%				
15. Answers to student questions	4.63	27 67.5%	11 27.5%	2 5.0%			

Background Information:

16. Would you recommend this course?

1 no
 6 majors only
 33 anyone interested

17. Is this course:

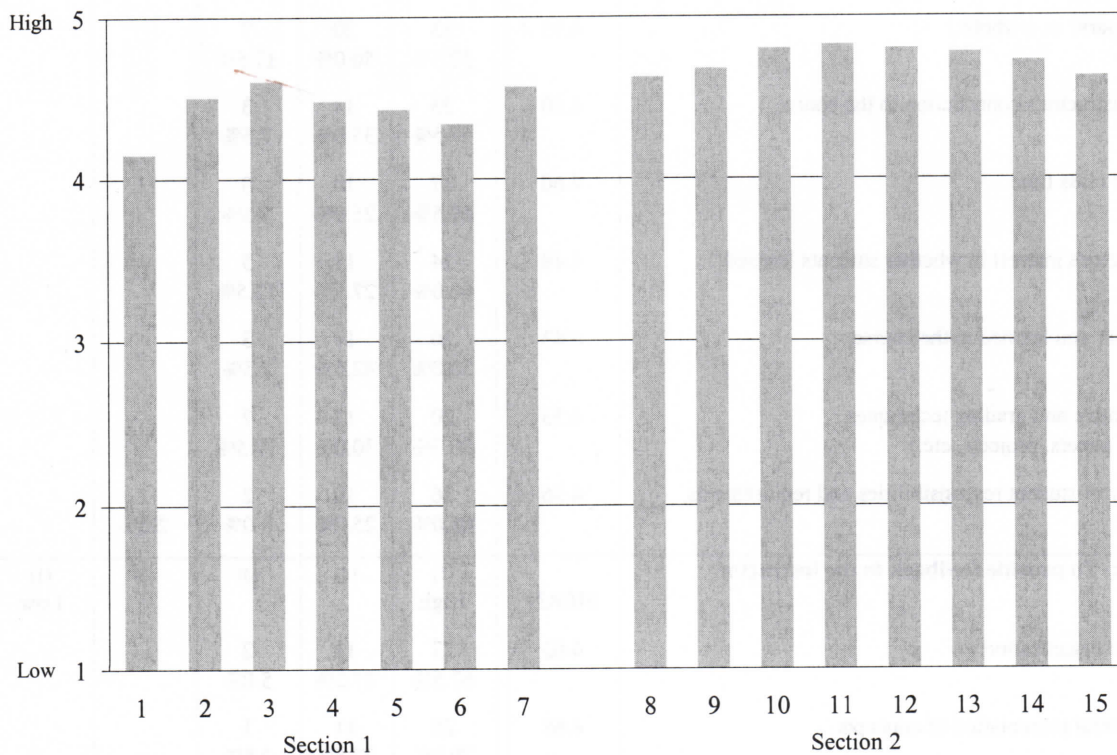
4 in your major
 5 not in major but required for program
 27 an elective
 4 other

18. Class:

18 Fr
 15 So
 2 Jr
 3 Sr
 Grad
 2 Other

19. What grade do you expect to receive?

10 A
 22 B
 8 C
 D
 P
 F/NC



Please return any unused/blank evaluation forms either to your department office or to Institutional Research.